

Vetpath is a specialist veterinary laboratory dedicated to providing our clients with the finest laboratory diagnostic service. A team of veterinary pathologists and medical scientists with extensive experience in veterinary diagnostic pathology forms the core of the Vetpath team.

VN News

MARCH 2021

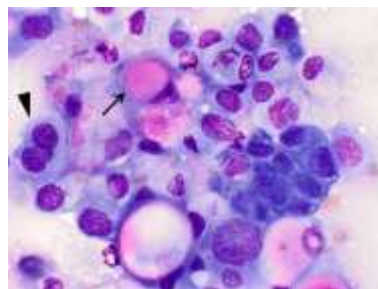
BRAF Urine test for urothelial cancer now available

Vetpath is now offering the BRAF urine test for bladder and prostate neoplasia. This test is performed by Antech Diagnostics in the United States.

The canine cancer detection BRAF mutation detection assay is a DNA-based test to screen for urinary bladder (TCC) or urethral transitional cell carcinoma (UC). Sentinel Biomedical have identified that a mutation in the BRAF gene is found in cases of TCC and UC. The mutation has been detected in 85% of confirmed cases of neoplasia, but has not been detected in the urine of healthy dogs or those with benign polyps, inflammation, haematuria or bacteriuria. This makes the test highly specific.

A free catch urine sample is suitable and 40ml of urine is placed into a container containing a liquid preservative. Multiple collections can be used to achieve the required volume and the urine must be placed into the container immediately. Please check that the container and preservative are within their used by date. A test kit is available through Vetpath and includes the sample collection container, instructions on how to collect a sample and an Antech submission form.

Please contact the laboratory to speak with our Client Liaison Officer Lisa or a pathologist if you have questions regarding this test.



<https://www.dvm360.com/view/clinical-rounds-transitional-cell-carcinoma>

References:

1. Sentinelbiomedical.com, www.sentinelbiomedical.com/
2. Mochizuki H, Shapiro SG, Breen M. Detection of BRAF Mutation in Urine DNA as a Molecular Diagnostic for Canine Urothelial and Prostatic Carcinoma. PLoS ONE 10(12): e0144170. <https://doi.org/10.1371/journal.pone.0144170>

Vaccination status IFA

Vaccination status IFA testing for dogs and cats will now be performed on **Mondays and Thursdays** (previously Tuesday and Thursdays).

Samples need to be submitted by the close of business the day before the run (Saturday and Wednesday). Results are usually available late on the day of testing or early the next morning.

Cefovecin and urine cultures

From Monday the 22nd February, cefovecin (Convenia) sensitivity will replace gentamicin in the urine sensitivity set for small animals.

Vetpath receives multiple requests to include cefovecin in the sensitivity set for urine cultures. Since gentamicin is not routinely used as a first line therapy, we have decided replace it with cefovecin in the urine sensitivity set.

Inclusion of a specific antibiotic in the sensitivity panel of cultures can be requested on submission of the sample. This will incur no extra charge, however note that a maximum of seven antibiotics can be included in a sensitivity panel. If extra sensitivities are added on after the culture result has been issued, additional charges will apply. The additional fees are charged per organism, not per antibiotic.



Relocation update



Vetpath is less than two months away from moving to our new purpose-built facility where we will be co-located with Western Diagnostic Pathology.

The lab in Jandakot is complete with some of the administration staff already having moved into their offices. Vetpath will be moving in two stages with the final large move occurring on the weekend of the 24th April. More information regarding the move will be issued to Vetpath clients in the coming months.

During the moving process we will be continuing to provide our pathology service with minimum disruption to our clients.

We have a lot of work to do before relocating. The largest project for the laboratory staff is training for our new biochemistry analyser, the Cobas PRO. Correlation studies for three veterinary species will be

completed to ensure the results from this analyser are correct and accurate.

In addition, the logistics for our courier network need to be finalized. Any changes to your regular pick-up times will be communicated to you well in advance of the move to ensure practices are prepared.

If you have any questions regarding the move, please contact our Client Liaison Office Lisa Horton or Clinical Director Leanne Twomey.

Vetpath Supplies & Consumables

Vetpath provides many consumables at no charge and the order form is available at www.vetpath.com.au

Please note that Vetpath couriers will no longer be carrying consumables in their car.

All consumables can be ordered from Vetpath Reception using the order form. Please download and fill in the form, and send to Vetpath.reception@vetpath.com.au

VETERINARY PATHOLOGISTS

Jenny Hill BVSc (Hons) Dip ACVP, John Jardine BVSc MMedVet (Path) Dip MRCVS,
Celia Smuts BVSc MVS MSc PhD ACVP, Jason Stayt BSc BVSc Dip ACVP, Leanne Twomey BSc BVMS (Hons) PhD Dip ACVP,
Audra Walsh BSc BVMS Dip ACVP,
ABN 24 006 909 173 SPECIALIST VETERINARY SERVICES trading as
VETPATH LABORATORY SERVICES NATA Accredited Laboratory Number 14776



NATA Accredited
Laboratory Number 14776